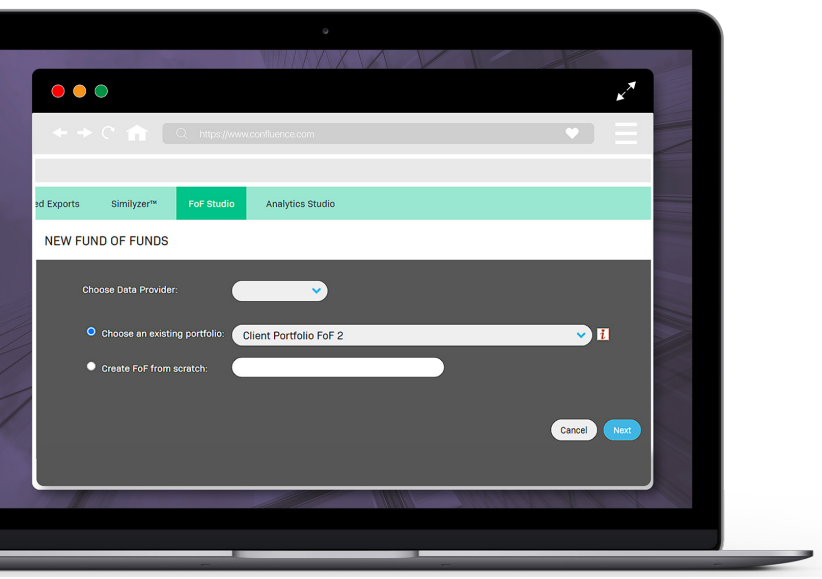


Style Analytics Fund of Funds Studio

Multi-manager Use Case

A multi-manager needs to identify substitute funds, outside of the buy-list, to address a drift in Value exposure for their product. Traditionally, the manager would need to reach out to individual fund managers for holdings data, a tedious process that limits the number of funds they can review and often results in distractions. The multi-manager desires a quicker, streamlined way to access the greater fund opportunity set.

Using Fund of Funds (FoF) Studio, the multi-manager can quickly perform analyses of underlying funds to (1) view sub-fund style exposure contributions to the overall product (2) compare sub-funds across factors (3) evaluate the investment strategy and exposures by drilling down into fund-level drivers.



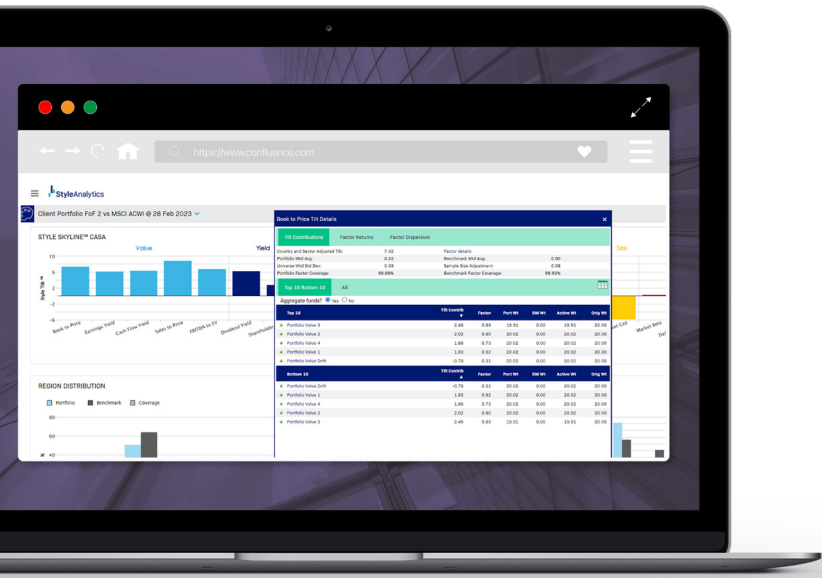
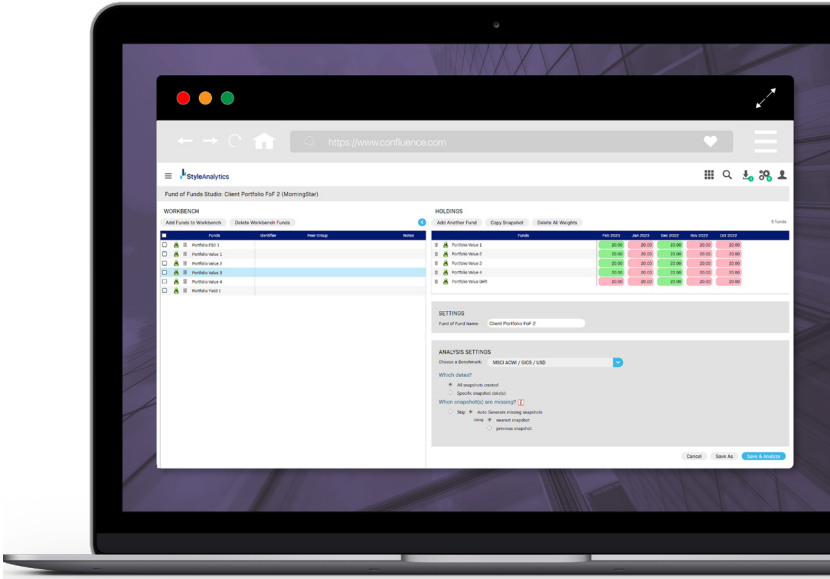
1. Simple pulldown menu makes building the fund of funds easy in FoF Studio.



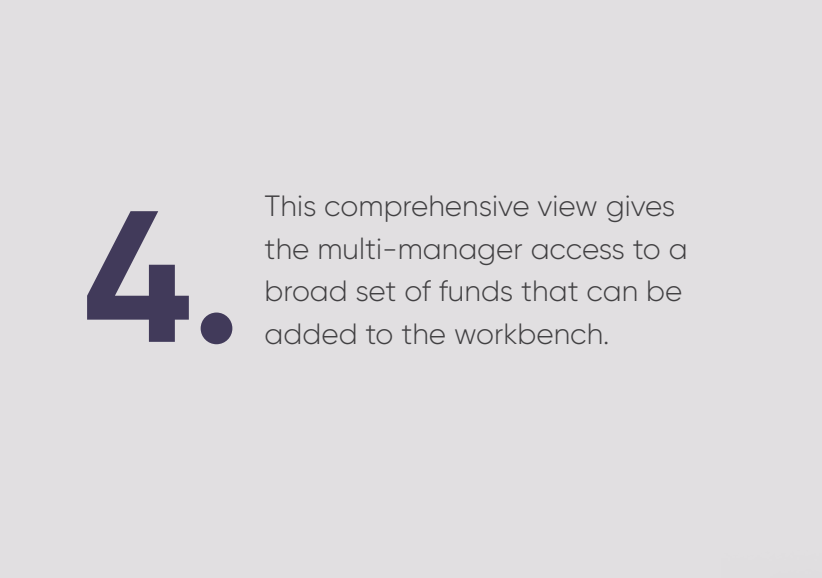
Now that the multi-manager knows which funds need to be replaced, they can use FoF Studio to find similar funds and compare factor exposures and more to find the right fit. FoF Studio allows them to quickly filter, then objectively analyze and assess fund options, all from a massive database of 28,000+ funds.



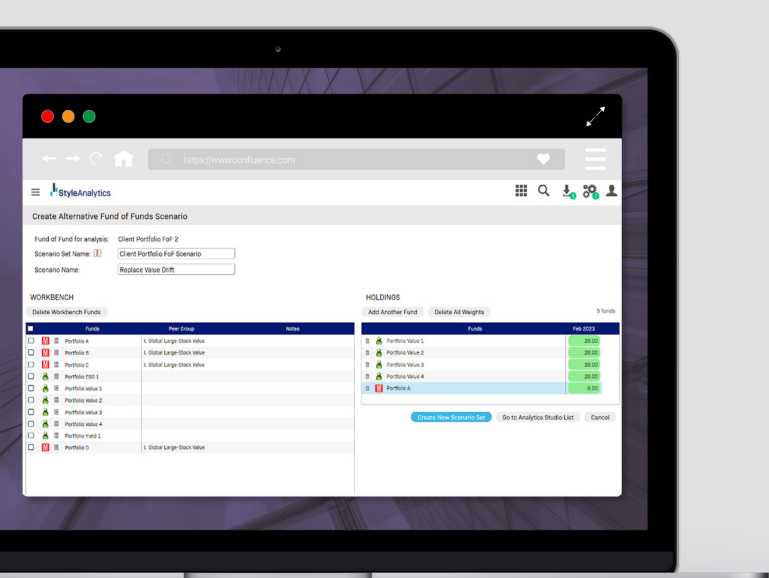
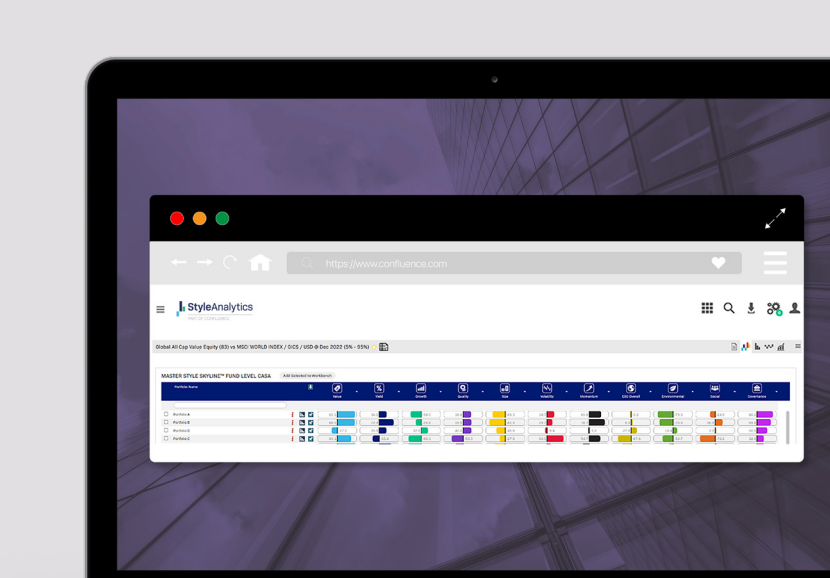
The fund of funds is added to the FoF Studio workbench.



From the intuitive interface, the multi-manager can simply click to delve into the causes of style drift, quickly identifying the sub-funds driving the change in exposure.



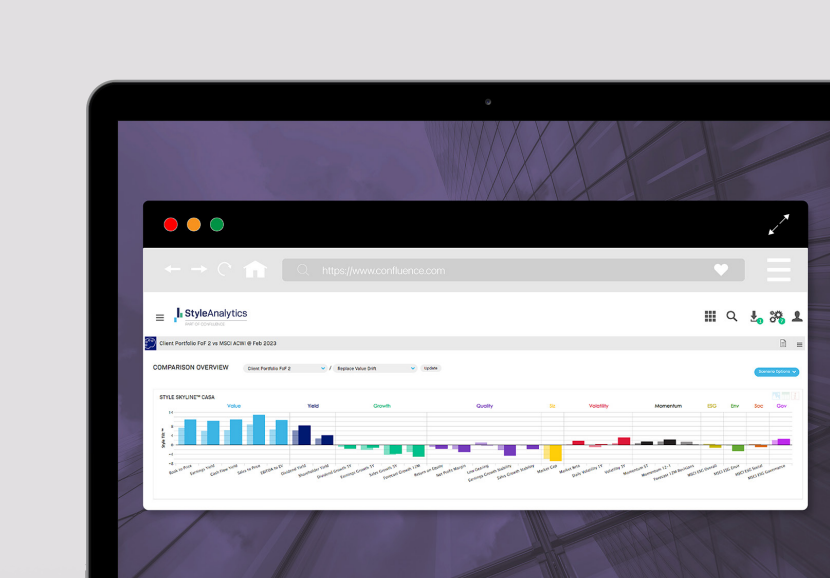
This comprehensive view gives the multi-manager access to a broad set of funds that can be added to the workbench.



Now that the multi-manager has identified possible replacement funds, it's time to build alternate fund of funds scenarios. FoF Studio allows the multi-manager to experiment with ease and quickly compare up to eight subfund variations.



With compelling visuals, the multi-manager can demonstrate, at a glance, how their proposed fund substitution stacks up against the incumbent. Here, we see the original portfolio in the skyline with a light shading, and the new portfolio with the dark shading.



With Fund of Funds Studio, the multi-manager can address their style drift in Value and prove their new fund-proposal case quickly, with confidence.

See what Fund of Funds Studio can do for you.



VALUE



YIELD



GROWTH



QUALITY



SIZE



VOLATILITY



MOMENTUM



ESG



CARBON

See what Fund of Funds can do for you >